

# GLM711AVB

## Tooth Sensor Module with Integrated Magnet

The sensor GLM711AVB is intended for the use with passive scales with a pitch of 1 mm. A bias magnet for the necessary magnetic field and the sensor element is combined in a very small housing. The integration supports an optimal adjustment between sensor and magnet which helps to generate a very high quality of sensor signals.

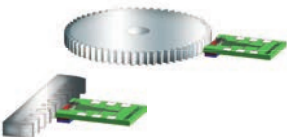
Together with a ferromagnetic tooth structure, the sensor delivers two 90 degree phase shifted analog signals (sine and cosine).



### Product Overview

Part no.	Article	Description
5127.2322.0	GLM711AVB-UA	GMR Sensor module with 1.5 m cable and LEMO connector

### Measurement Setup

Depiction	Configuration	Application
	Ferromagnetic toothed rack or toothed wheel with fixed pitch; sensor with bias magnet mounted perpendicularly to the rack	Continous position detection with analog output

### Features GMR Sensor

- Very small size
- Magnetically biased
- Wired ready for connection

### Applications

- Valve lift measurement in fired engines
- Valve rotation measurement
- Tappet rotation measurement
- Toothed wheel or rack measurement
- Measuring at sliding cam mechanism
- Many other applications with toothed structured elements



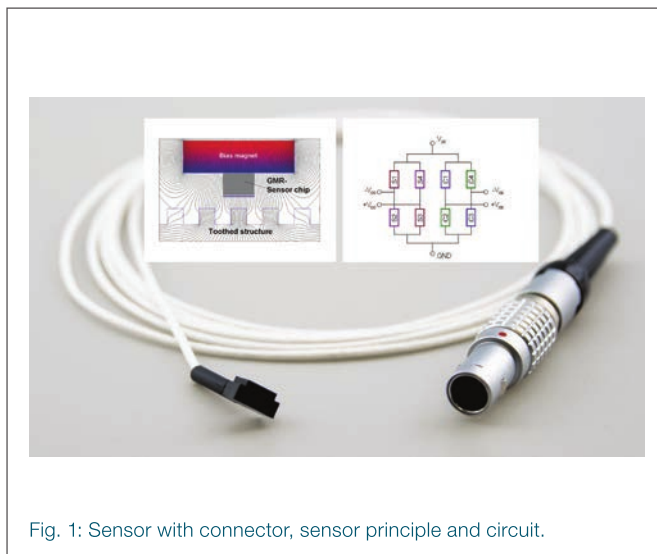
## Technical Data

Symbol	Parameter	Conditions	Min.	Typ.	Max.	Unit
$V_{CC}$	Supply voltage		-	+5.0	-	V
$I_C$	Current consumption		1.0	1.2	1.4	mA
$R_S$	Sensor resistance		2.4	2.8	3.2	k $\Omega$
$V_{out}$	Sensor output voltage <sup>1)</sup>	Working distance 150 $\mu$ m	-	25	-	mV
$f_{out}$	Frequency range		1.0 <sup>2)</sup>	-	-	MHz
$p$	Sensor pitch		-	1.0	-	mm
$T_{amb}$	Ambient temperature		-25	-	+150	$^{\circ}$ C
$V_{Sensoff}$	Offset voltage per $V_{CC}$		-3.0	-	+3.0	mV / $V_{CC}$
$TC_{Voff}$	Temperature coefficient of $V_{off}$	$T_{amb} = (-25...+125) ^{\circ}$ C	-3.0	-	+3.0	$\mu$ V/K
$v$	Movement speed		0	-	40	m/s
$\Delta_{radial}$	Working distance (sensor head to scale)		-	150	200	$\mu$ m

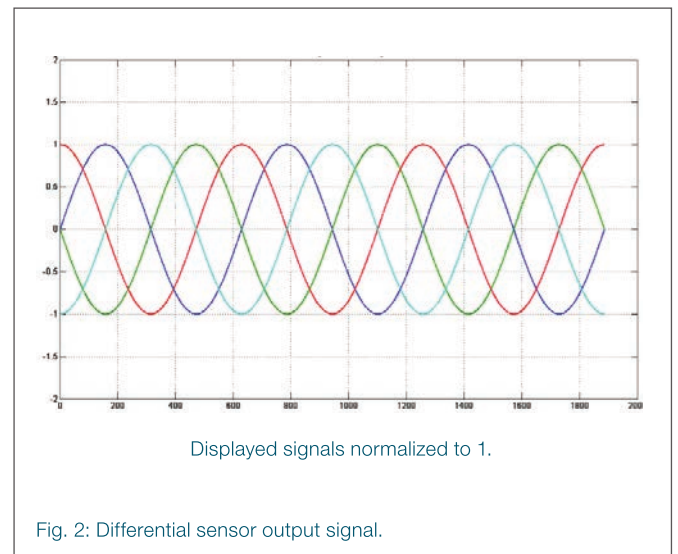
<sup>1)</sup> Depends on the air gap between sensor head and scale

<sup>2)</sup> No significant amplitude loss in this frequency range.

## System Schematics

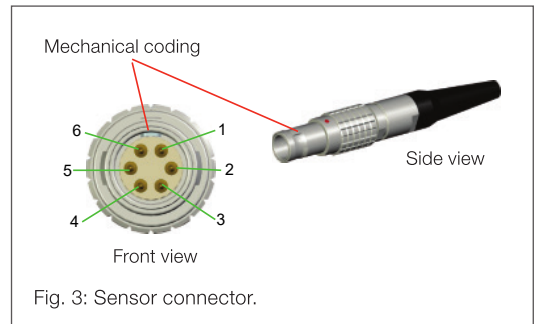


## Typical Performance Graphs

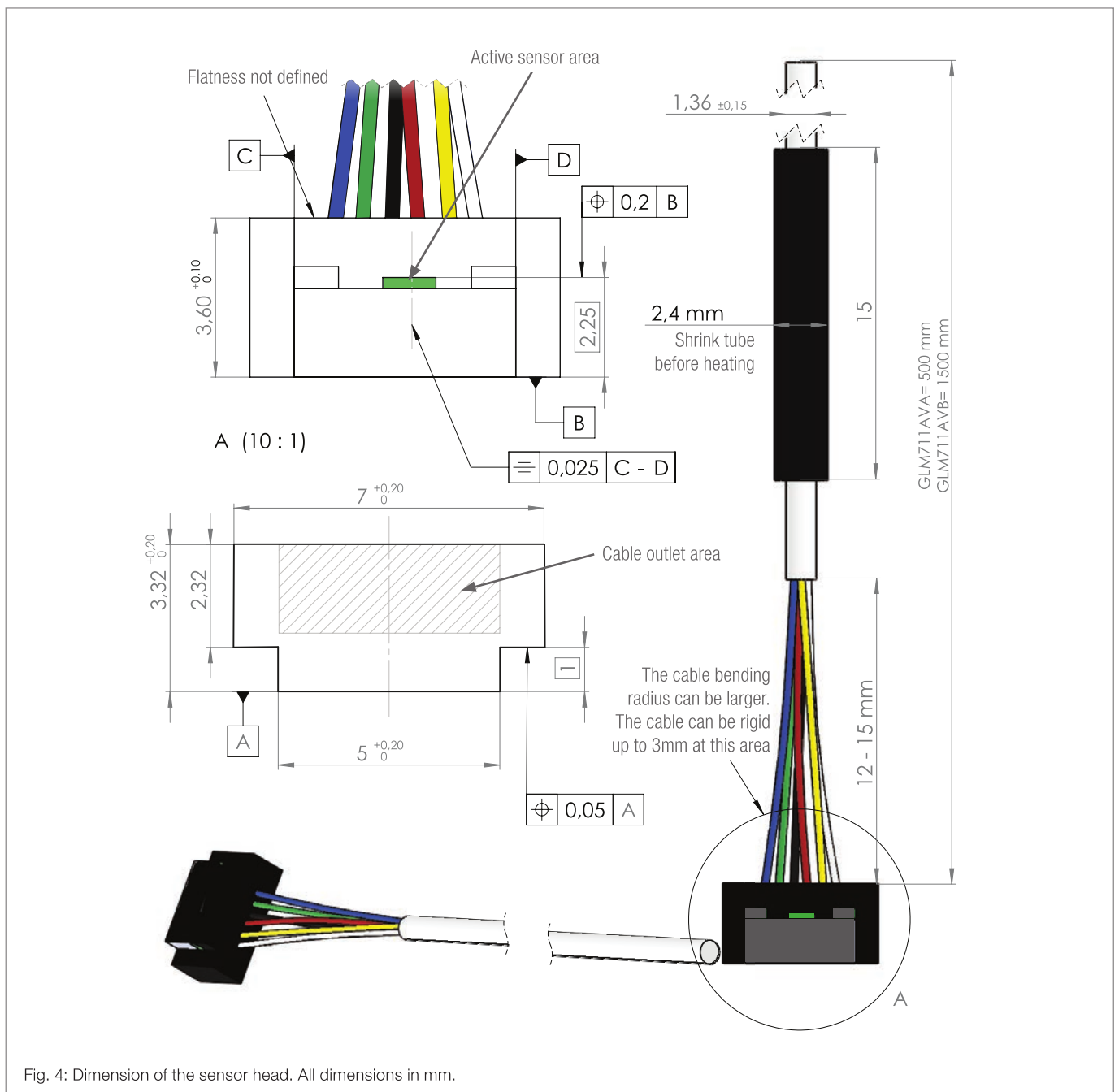


### Pinning of GLM711AVB

Pin	Symbol	Parameter
1	+COS	Positive cosine output
2	-COS	Negative cosine output
3	+SIN	Positive sine output
4	-SIN	Negative sine output
5	GND	GND
6	V <sub>cc</sub>	Supply voltage (5 V)



### Dimension of GLM711AVB



Adjustment and Mounting of the Sensor Head

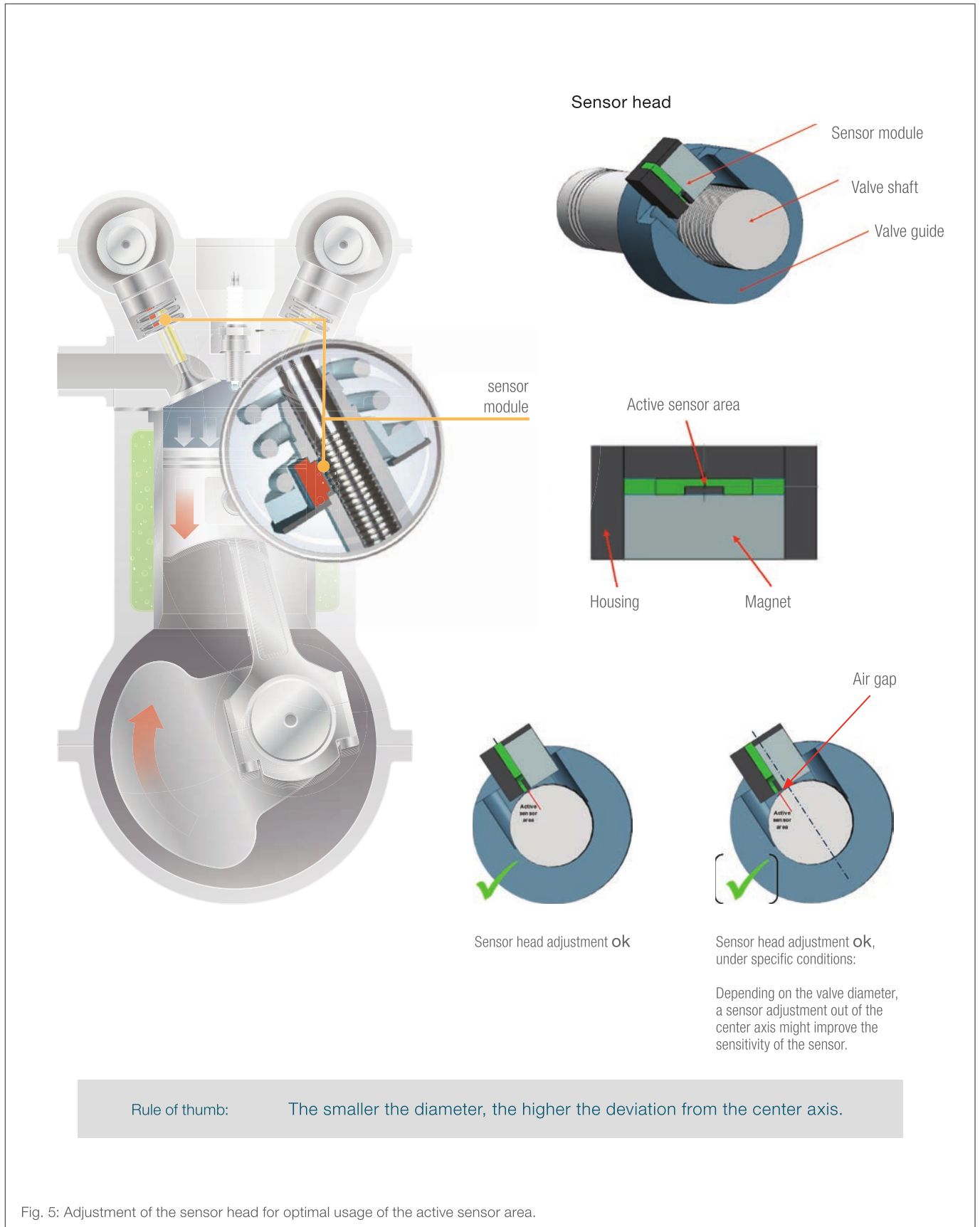


Fig. 5: Adjustment of the sensor head for optimal usage of the active sensor area.

**Tooth Structures**

The sensor modules can be used at most different toothed shapes. To get an optimal signal from the sensor module the toothed profiles should correspond to certain relations. In the following table you will find an overview of often used toothed profiles and their relations.

Recommended tooth pitches	h tooth height	w tooth top and width	g tooth gap	d air gap
	$\approx \frac{p}{4}$	$\sim \frac{p}{3}$	$\sim \frac{2p}{3}$	$\sim \frac{p}{5}$
	$\approx \frac{p}{4}$	$\sim \frac{p}{3}$	$\sim \frac{2p}{3}$	$\sim \frac{p}{5}$
	$\approx \frac{p}{4}$	$\sim \frac{p}{3}$	$\sim \frac{2p}{3}$	$\sim \frac{p}{5}$
	$\approx \frac{p}{3}$	—	—	$\sim \frac{p}{5}$

Fig. 6: Table with typical parameters for the design of the tooth structure.

## General Information

### Product Status

Article	Status
GLM711AVB-UA, sensor head	The product is in series production.
<b>Note</b>	The status of the product may have changed since this data sheet was published. The latest information is available on the internet at <a href="http://www.sensitec.com">www.sensitec.com</a> .

### Disclaimer

Sensitec GmbH reserves the right to make changes, without notice, in the products, including software, described or contained herein in order to improve design and/or performance. Information in this document is believed to be accurate and reliable. However, Sensitec GmbH does not give any representations or warranties, expressed or implied, as to the accuracy or completeness of such information and shall have no liability for the consequences of use of such information. Sensitec GmbH takes no responsibility for the content in this document if provided by an information source outside of Sensitec products.

In no event shall Sensitec GmbH be liable for any indirect, incidental, punitive, special or consequential damages (including but not limited to lost profits, lost savings, business interruption, costs related to the removal or replacement of any products or rework charges) irrespective the legal base the claims are based on, including but not limited to tort (including negligence), warranty, breach of contract, equity or any other legal theory.

Notwithstanding any damages that customer might incur for any reason whatsoever, Sensitec product aggregate and cumulative liability towards customer for the products described herein shall be limited in accordance with the General Terms and Conditions of Sale of Sensitec GmbH. Nothing in this document may be interpreted or construed as an offer to sell products that is open for acceptance or the grant, conveyance or implication of any license under any copyrights, patents or other industrial or intellectual property rights.

Unless otherwise agreed upon in an individual agreement Sensitec products sold are subject to the General Terms and Conditions of Sales as published at [www.sensitec.com](http://www.sensitec.com).

## General Information

### Application Information

Applications that are described herein for any of these products are for illustrative purposes only. Sensitec GmbH makes no representation or warranty – whether expressed or implied – that such applications will be suitable for the specified use without further testing or modification.

Customers are responsible for the design and operation of their applications and products using Sensitec products, and Sensitec GmbH accepts no liability for any assistance with applications or customer product design. It is customer's sole responsibility to determine whether the Sensitec product is suitable and fit for the customer's applications and products planned, as well as for the planned application and use of customer's third party customer(s). Customers should provide appropriate design and operating safeguards to minimize the risks associated with their applications and products.

Sensitec GmbH does not accept any liability related to any default, damage, costs or problem which is based on any weakness or default in the customer's applications or products, or the application or use by customer's third party customer(s). Customer is responsible for doing all necessary testing for the customer's applications and products using Sensitec products in order to avoid a default of the applications and the products or of the application or use by customer's third party customer(s).

Sensitec does not accept any liability in this respect.

### Life Critical Applications

These products are not qualified for use in life support appliances, aeronautical applications or devices or systems where malfunction of these products can reasonably be expected to result in personal injury.

### Copyright © by Sensitec GmbH, Germany

All rights reserved. No part of this document may be copied or reproduced in any form or by any means without the prior written agreement of the copyright owner. The information in this document is subject to change without notice. Please observe that typical values cannot be guaranteed. Sensitec GmbH does not assume any liability for any consequence of its use.

### Changelist

Version	Description of the Change	Date
GLM711AVB.DSE.00	Original (pp. 1-7)	02/2023

**Sensitec GmbH**  
 Schanzenfeldstr. 2 · 35578 Wetzlar · Germany  
 Tel. +49 6441 5291-0  
 www.sensitec.com · sensitec@sensitec.com

**Sensor available at exclusive sales partner:**

**ROTEC**

TORSIONAL VIBRATION PROFESSIONALS

**VISPIRON ROTEK GmbH**

Joseph-Dollinger-Bogen 28  
 80807 München  
 Germany

Tel. +49 89 323 651 0  
 www.rottec-munich.de